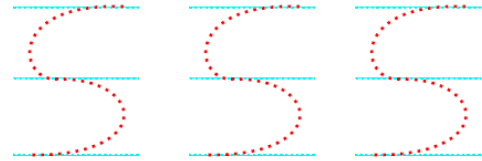
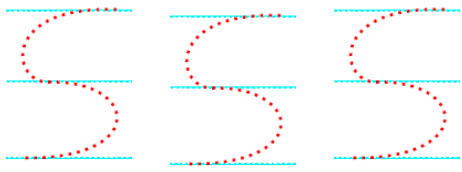
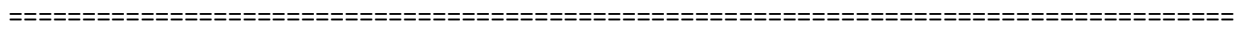


S = TA

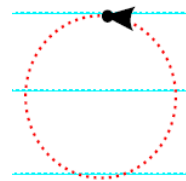
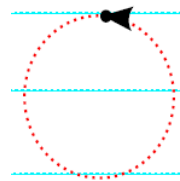
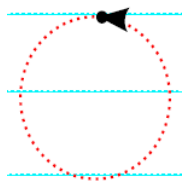
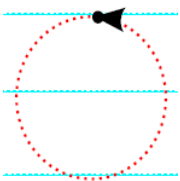


കടുവ = Katuva = Tiger	കടലാസ് = Katalaas = Paper
കണ്ണാടി = Kannaati = Mirror	കടുക് = Katuk = Mustard
കണ്ണു = Kannata = Goggle/Eye glass	പടി = Pati = Step

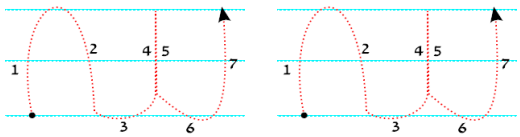
S + ഇ =	S + = ടേ
S + = ടി	S + റ്റ =
S + ഉ =	S + റു =
S + = ടു	S + = ടേ ടു



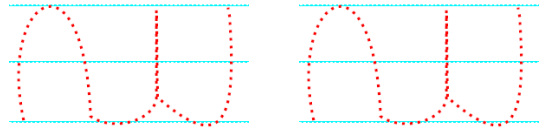
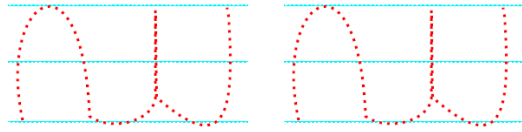
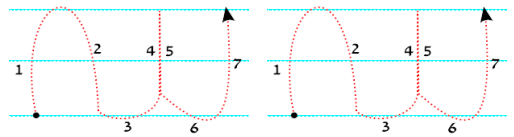
O = TTA



പഠിക്കുക = Patikkuka = Learn	കഠിനം = Kattinam = Tough
------------------------------	--------------------------



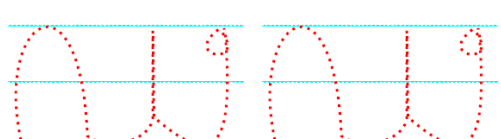
ഡ = DA



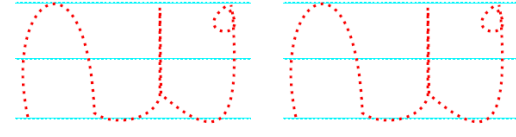
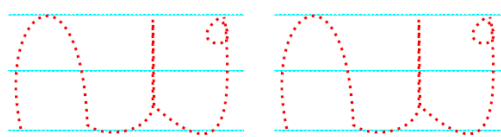
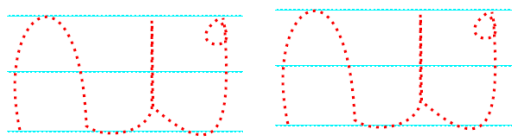
Sample Words

ഡാം = Dam	ഡ്രാമ = Drama
ഡയറി = Diary	ഡിപ്ലോമ = Diploma

ഡ + റ = ഡർ	ഡ + റ = ഡർ
ഡ + റി = ഡറി	ഡ + റ്റ = ഡർട്ട്
ഡ + ു = ഡൂ	ഡ + റ്റ = ഡർട്ട്
ഡ + ു = ഡൂ	ഡ + റ്റ = ഡർട്ട്
ഡ + ു = ഡൂ	ഡ + റ്റ = ഡർട്ട്
ഡ + ു = ഡൂ	ഡ + റ്റ = ഡർട്ട്



ഡാ = DDA



പണം = Panam = Money	പണി = Pani = Work
കണക്ക് = Kanakk = Mirror	കണിക = Kanika = Atom
തണുപ്പ് = Thanupp = Cold	തലയിണ = Thalayina = Pillow

Write Equivalent Vowel for the signs listed “As in first example”

ഃ =	ഌ =
ഐ =	ഏ =
ഐ =	ഔ =
ഏ =	ഏ =
ഏ =	ഏ =
ഏ =	ഏ =
ഏ =	ഏ =

