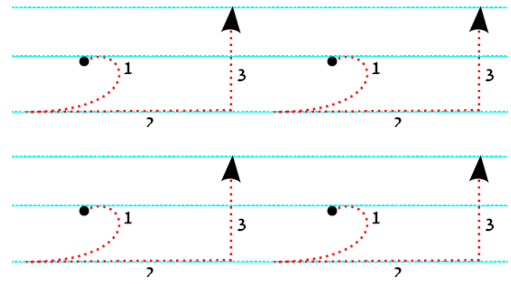
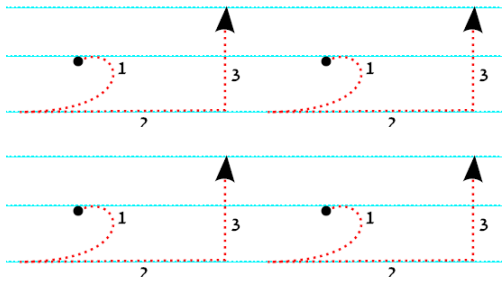


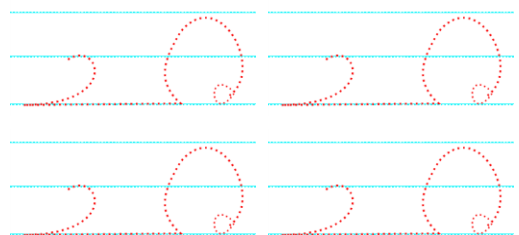
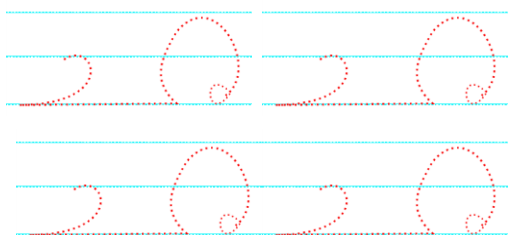
ച = CHA



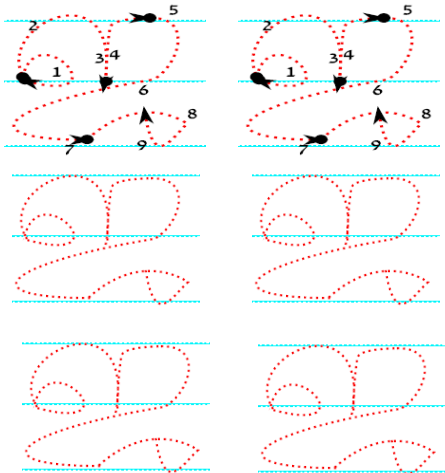
ചക്ക = Chakka = Jackfruit	ചിത്രം = Chithram = Picture
ചരിത്രം = Charithram = History	ചലനം = Chalanam = Motion
ചിരി = Chiri = Laugh	ചക്രം = Chakram = Wheel

ച + ഞ = ച്ച	ച + ഞ = ച്ച
ച + ഞ = ച്ച	ച + ഞ = ച്ച
ച + ഞ = ച്ച	ച + ഞ = ച്ച
ച + ഞ = ച്ച	ച + ഞ = ച്ച
ച + ഞ = ച്ച	ച + ഞ = ച്ച
ച + ഞ = ച്ച	ച + ഞ = ച്ച

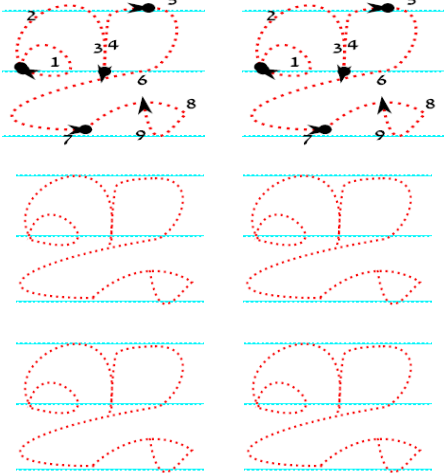
ചര = CHCHA



ചരായ = chchaya = Shade	അച്ഛൻ = Achan = Father
------------------------	------------------------



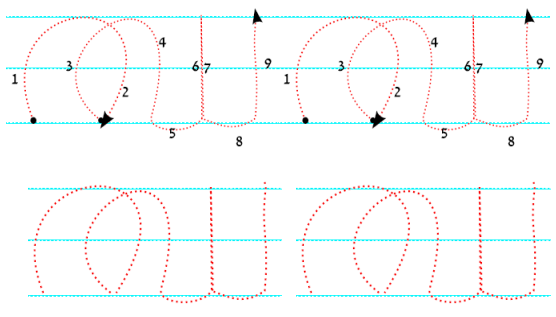
ജ = JA



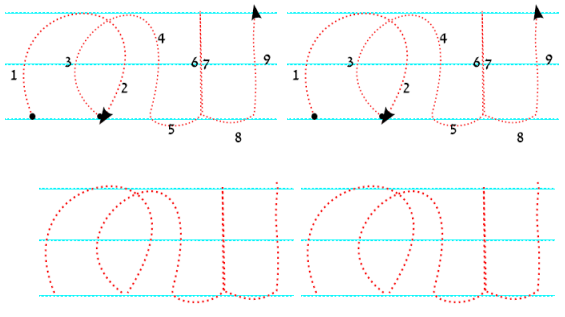
Sample Words

ജയം = Jayam = Victory	ജേതാവ് = Jethav = Winner
ജലം = Jalam = Water	ജോഡി = Joodi = Pair or couple
ജനം = Janam = People	ജോലി = Jooli = Work
ജ്വരം = Jvaram = Fever	ജില്ല = Jilla = District
ജ്യോതിഷം = Jyothisham = astrology	ജ്വാല = Jvaala = Flame

ജ + ു =	ജ + ു = 6 ജ
ജ + ി = ജി	ജ + ു =
ജ + ു =	ജ + ു = 66 ജ
ജ + ു = ജു	ജ + ു = 6 ജു
ജ + ു =	ജ + ു =
ജ + ു =	ജ + ു =

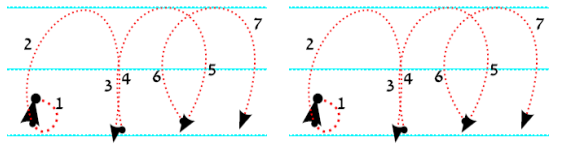


ശ = JHA

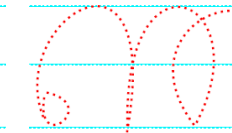
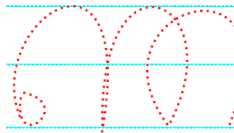
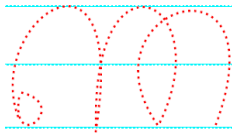
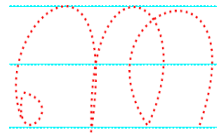
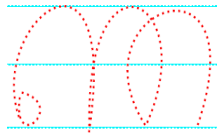
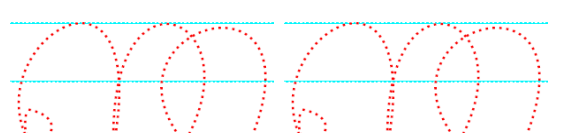
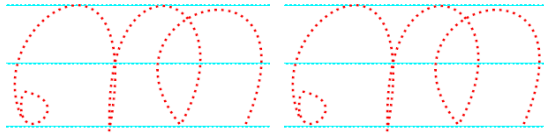
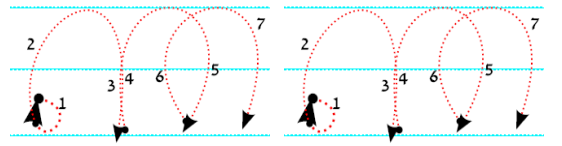


Write Equivalent Vowel for the signs listed “As in first example”

	=			=	
	=			=	
	=			=	
	=			=	
	=			=	
	=			=	
	=			=	



ഞ = NJA



ഞ + ഞ = ഞ്ഞ

Sample Words

ഞായർ = Njayar = Sunday	മഞ്ഞ = Manj = Snow
ജിജ്ഞാസ = Jijnasa = Curiosity	മഞ്ഞ = Manja = Yellow
പടിഞ്ഞാറ് = Patinjar = West	പഞ്ചസാര = Panchasara = Sugar